

WILL YOU SIGN TO SUPPORT US?

Scouts are leafleting 1,000 homes this week. We are also leafleting the parents at St Bede School.

If you support the Scouts' proposal that:

- WCC might grant Scouts a long lease on a peppercorn rent (as with other Scout buildings across Winchester)
- The site be fenced in for safeguarding reasons
- The facility is for wider community/schools' use when not used by Scouts

...then will you please sign below?

This could be done:

EITHER when Explorer Scouts knock on your door in a week's time to talk to you

OR by completing and signing below, and leaving this leaflet sticking out of your letterbox for us to collect.

WINCHESTER DISTRICT SCOUTS & THE ST. BARTHOLOMEW WARD

Winchester Scouts has some 900 girls & boys, over 200 trained leaders and 300 CRB'd supporters. We are all volunteers.

With new housing there are now 90-100 children in each 0-5 age cohort in the Ward that we could provide Beaver places for.

1. What we've done so far

We opened 2 new Beaver Colonies for the Ward in January for 6-7 year olds. If there were demand, we could open a third Colony to provide 36 places every year.

2. What we will do next if you and the local community support our initiative

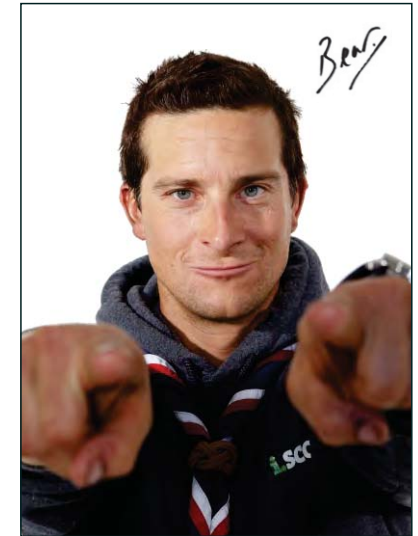
We will formally approach WCC. On behalf of the new 6th Winchester (St Bartholomew) Scout Group our 14-18 year old Explorer Scouts would make a public presentation to the Town Forum.

3. If WCC were to agree to a long lease

then Scouts and friends would clear and plant the site; and use it with temporary buildings. We would also start the main project. Scout building projects typically last up to 5 years: 1 year for detailed planning permission; 2-3 years for fund-raising; and 1 year for construction.



THE YOUNG PEOPLE OF
ABBOTTS BARTON & HYDE



NEED YOU!

PLEASE HELP...

<http://www.winscouts.org.uk>
scouts@winscouts.org.uk

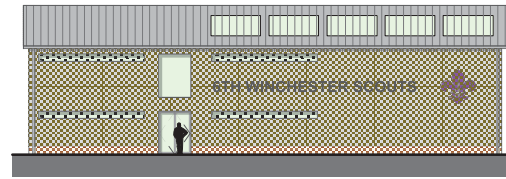
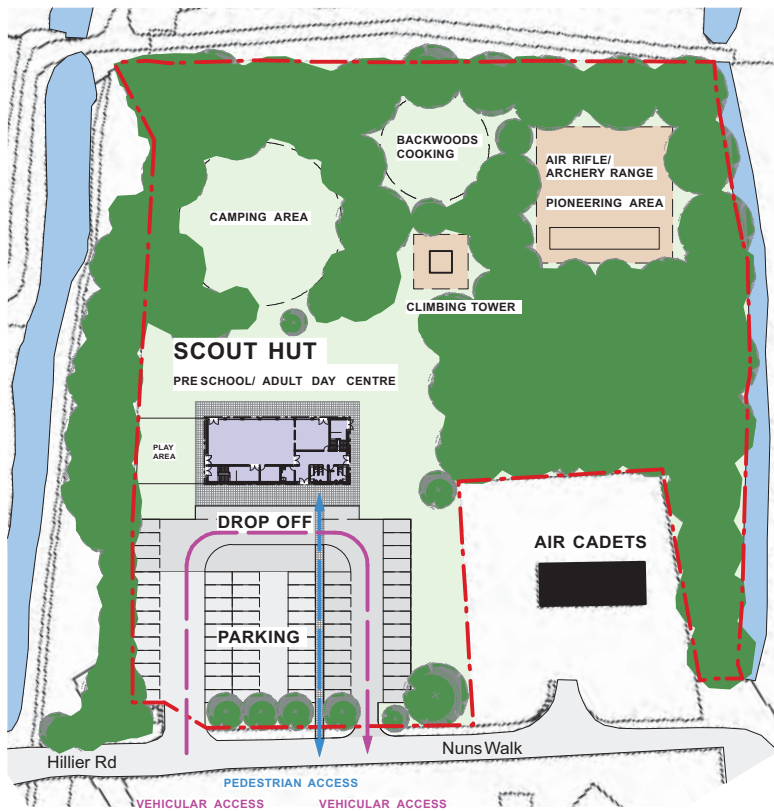
Name

Signature

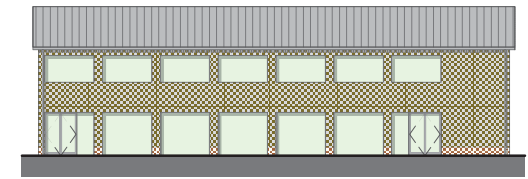
Address

Postcode

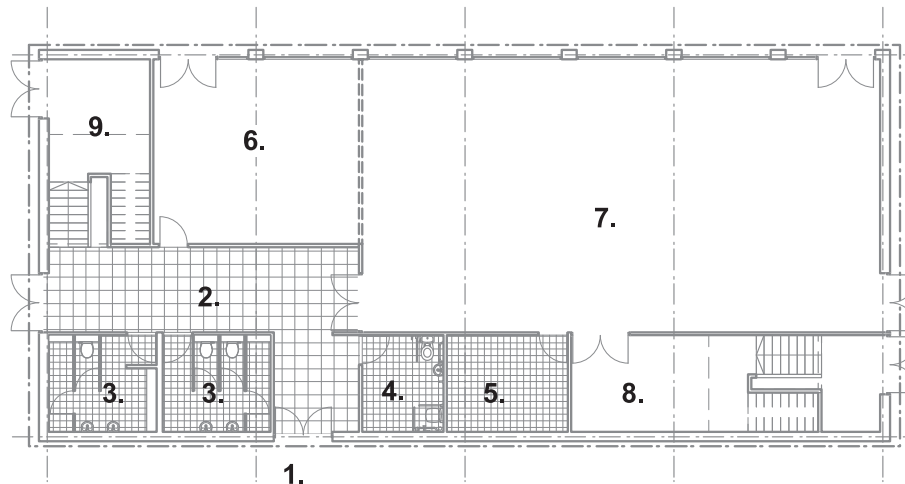
Email



front elevation



back elevation



key:

- 1. entrance
- 2. lobby
- 3. toilets + shower
- 4. acc wc + shower
- 5. kitchen
- 6. group rm
- 7. hall
- 8. store
- 9. plant

PLEASE SIGN TO SUPPORT US

Our aim is to build a facility, primarily for **young people**. This would be funded, built and managed by Scouts for a new Scout Group for up to 360 girls and boys. The facility would also be for wider community use.

The best site is the derelict ground behind the car park and the Air Cadet Hut in Hillier Road / Nuns Walk, opposite the football ground.

But we need the support of you and the local community before we can approach Winchester City Council (WCC) for a long lease.

WHY WE NEED YOUR SUPPORT

The Abbotts Barton Planning Framework identifies this site as having potential to be developed into a fully accessible amenity space with unrestricted public access.

Were this to happen, Scouts cannot proceed with any proposal. This is because Scouts must long lease and fence off the whole site for child safeguarding, safety and legal reasons.

For these reasons, Scouts first need local community support before we can submit a formal proposal to WCC.

PROVISIONAL PROPOSAL

This would be a 600 sq m, two floor building constructed behind an enlarged car park with a dropping off bay and some 68 car parking spaces.

The facility would be available for community and schools' use when not used by up to 360 Scouts plus Guides. This would include day time, weekend, and evenings not used by Scouts. Day time use might include pre-schools or some day centre for the elderly.